



## Mount on all terrains, in no time.

The IronRidge Ground Mount System combines our XR1000 rails with locally-sourced steel pipes, or mechanical tubing, to create a cost-effective structure capable of handling any site or terrain challenge.

Installation is simple with only a few structural components and no drilling, welding, or heavy machinery required. In addition, the system works with a variety of foundation options, including concrete piers and driven piles.



### Rugged Construction

Engineered steel and aluminum components ensure durability.



### PE Certified

Pre-stamped engineering letters available in most states.



### Simple Assembly

Just a few simple components and no heavy equipment.



### Design Software

Online tool generates engineering values and bill of materials.



### Flexible Architecture

Multiple foundation and array configuration options.



### 20 Year Warranty

Twice the protection offered by competitors.



**360° Product Tour**  
Visit [ironridge.com](http://ironridge.com)

## Substructure

### Top Caps



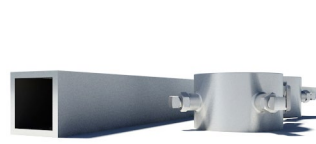
Connect vertical and cross pipes.

### Rail Connectors



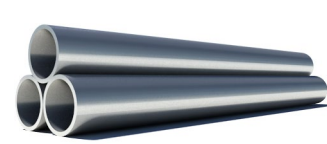
Attach Rail Assembly to horizontal pipes.

### Diagonal Braces



Optional Brace provides additional support.

### Cross Pipe & Piers



Steel pipes or mechanical tubing for substructure.

## Rail Assembly

### XR1000 Rails



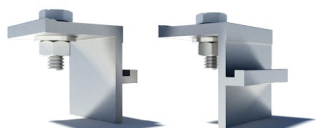
Curved rails increase spanning capabilities.

### Top-Down Clamps



Secure modules to rails and substructure.

### Under Clamps



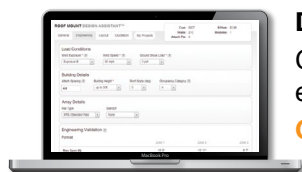
Alternative clamps for pre-attaching modules to rails.

### Accessories



Wire Clips and End Caps provide a finished look.

## Resources



### Design Assistant

Go from rough layout to fully engineered system. For free.

Go to [ironridge.com/gm](http://ironridge.com/gm)



### NABCEP Certified Training

Earn free continuing education credits, while learning more about our systems.

Go to [ironridge.com/training](http://ironridge.com/training)